

StarWatch

Integrated Security
Management System

evolution of proven technology



FEATURES

Enterprise Class Security Management

- Scalable access control, video & alarm management
- Integrated card management
- SQL Server® based
- Hot switch multi-language support
- BACnet® support

StarWatch provides a scalable platform which can accommodate a range of solutions from alarm management or access control through to complex enterprise-wide security management

System Overview

The latest generation StarWatch system is the result of a 20 year evolutionary process in the development of integrated security management systems.

Designed using the latest Microsoft.NET Framework, StarWatch utilises SQL Server® as a relational database and runs in the Windows Server/XP and 7 environments. This ensures wide compatibility with corporate IT systems.

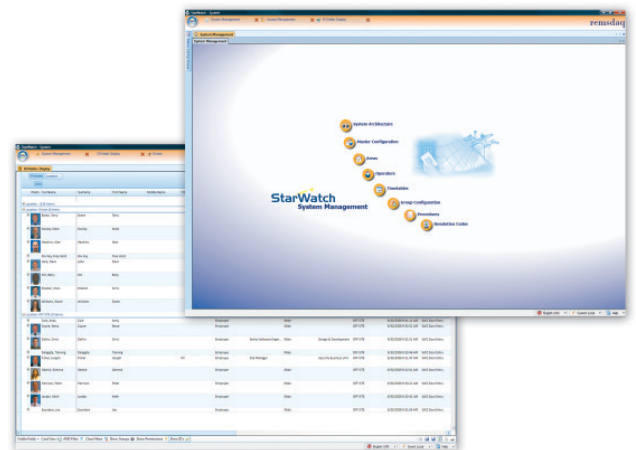
Business Critical applications are accommodated with a variety of redundancy solutions including replication, mirroring and clustering. Geographically dispersed redundancy is readily accommodated.

Advanced video management solutions allow for control of both traditional CCTV matrixes as well as leading edge digital recording systems. Typical facilities include PTZ camera control, preset positioning on alarm and configurable pre and post alarm video.

The system also provides hot switch multi-language support such that the database and system displays can be held in more than one language and switched instantly.

An integral card management system is available which features advanced card design features, encoding and conditional printing support.

StarWatch is designed with open connectivity in mind and provides support for BACnet® which allows the connection of third party digital I/O equipment to StarWatch over IP.



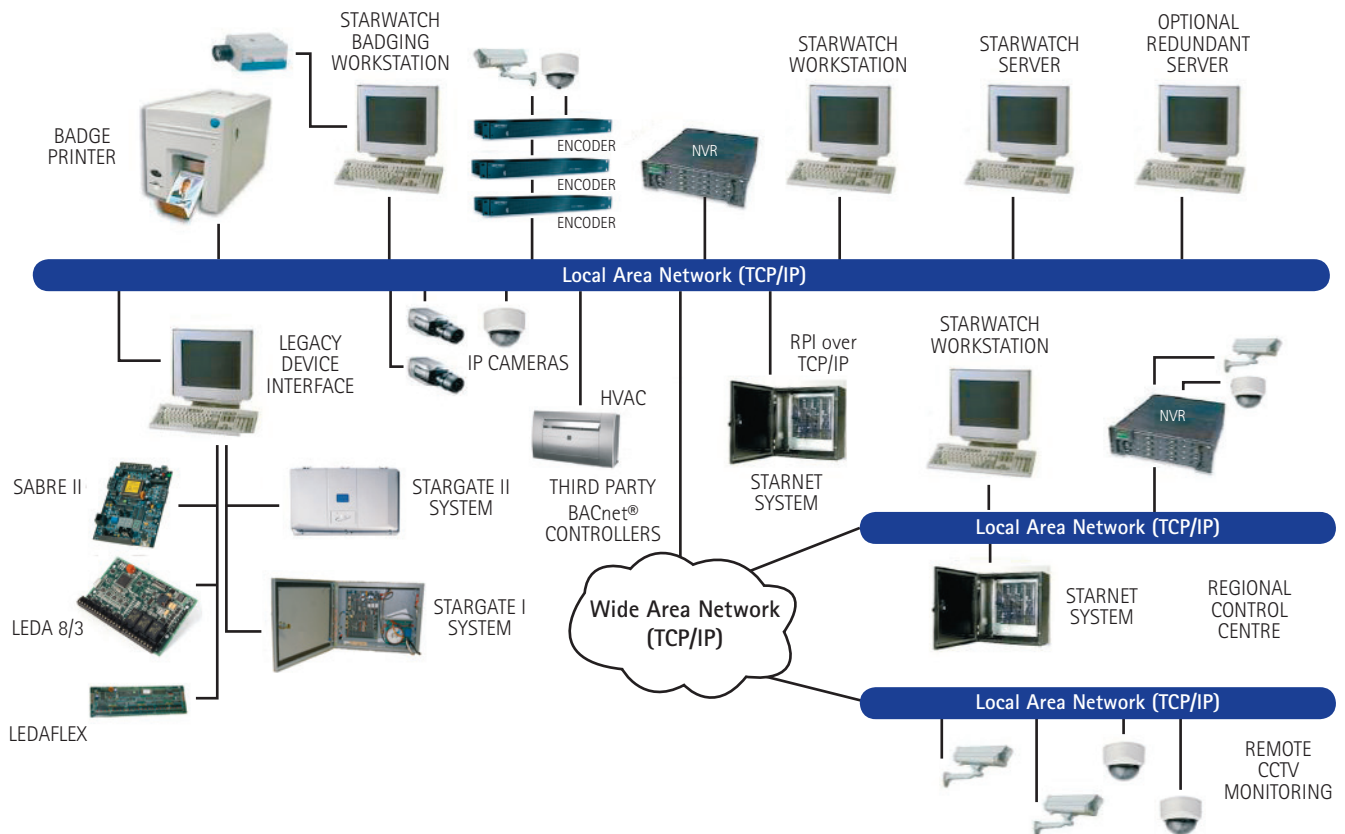
Disaster management reporting is provided by the Dynamic Mustering application. This provides an efficient and effective real-time report for emergency services in the event of an emergency. Existing StarWatch customers are catered for by the optional Legacy Device Interface (LDI) which allows older generation StarGate I and StarGate II equipment to be seamlessly integrated into the latest StarWatch system.

StarWatch systems have been deployed in many vertical markets including airports, prisons, banks, power stations, nuclear facilities, petrochemical plants, substations, gas terminals and ports.

Strategic Partnerships

System

Typical System Architecture



StarWatch is a scalable, modular system which easily accommodates applications from simple PIDS management to enterprise-wide integrated security solutions. StarWatch has been designed as an open system. Third party digital I/O devices which support BACnet® over IP are directly supported.

As ever, backwards compatibility is maintained with three generations of Remsdaq remote hardware from StarGate I and II through to StarNET able to be connected to the latest StarWatch master station. Sabre customers are also catered for with integration of the Sabre II processor.

ns Integration

Total Solutions

Advanced System Features

High Availability Solutions

Many StarWatch systems are deployed in Mission Critical applications. Here, high system availability is essential. StarWatch systems support disk mirroring, replication or clustering dependent on requirement. Communications redundancy to field hardware is also accommodated. Geographically dispersed redundancy is supported to cater for disaster recovery facilities.

CCTV/Video Management

Simple serial protocol interfaces are available to most of the leading CCTV matrix switchers. These interfaces provide alarm activated camera switching and preset positioning of PTZ cameras. More advanced integration exists with the integration of digital video management systems whereby PTZ camera control and video playback is provided as an integral part of the StarWatch software. Pre and post alarm video clips of configurable duration are also linked into the StarWatch event system for playback as required. Advanced features such as the integration of content analytic alarms are also linked into StarWatch.

Third Party Data Exposure

This facility provides third party access to data held within the Remsdaq SQL Server® database. This allows the Remsdaq system to integrate with other MIS or Personnel systems in a seamless manner. This facility also allows data to be exposed such that custom SQL scripts can be written and applied to the data from the StarWatch system.



Card Studio

ID badge design and printing is an available facility within the StarWatch software suite. Full badge editing facilities allow for the custom creation of client specific badge designs. The system supports all Windows compatible printers and includes conditional printing to differentiate between different types of personnel or different clients in a multi client system.

Real-time Muster Reports

StarWatch supports real-time muster reports for disaster management. Musters can be either manually or automatically triggered and will cause a display to be produced which identifies all personnel within the muster area. As individuals muster at agreed locations, they are removed from the list. The system supports full or partial musters and accommodates facilities such as turnstile free wheel or exit only mode without operator intervention. Muster reports are produced which show photo ID images of personnel and last known location of all persons yet to muster.

StarNET

Access Control & Alarm Management

The StarNET range comprises access control and alarm management hardware available as either standalone equipment or integrated as part of the StarWatch system. In standalone mode, use is made of the in-built web browser StarWEB to effect configuration changes and to upload data from the units. A modular array of processor cards provide access control and digital input/output capability. Communication options include both Ethernet and serial as standard and redundancy is handled with either loop polling schemes or multiple IP reporting configuration.



Sabre

Fibre Optic PIDS

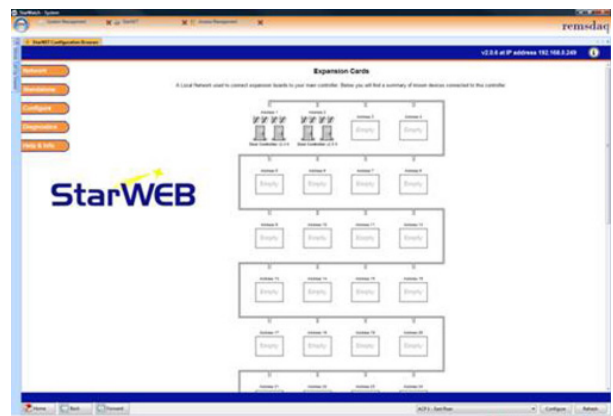
Sabre is a range of fibre optic PIDS (Perimeter Intrusion Detection System) available for either fence/wall mount or buried applications. Immunity to EMI/RFI interference make the equipment particularly suited to harsh environmental conditions. Sabre is available as a standalone product to integrate into third party alarm systems or integrated into the communications infrastructure of the StarWatch system. When operating as part of StarWatch, sensitivity adjustments to the PIDS can be made from the comfort of the StarWatch control centre.



StarWEB

Configuration Tool

StarWEB provides a simple, menu driven configuration tool to change the default settings of a StarNET system. StarWEB is accessed through a standard internet web browser such as Internet Explorer via secure password protection or directly from StarWatch and allows changes to settings such as door left open times or number of PIN attempts. If the StarNET system is operating in standalone mode, StarWEB provides the interface to allow for the creation and deletion of cards and the setting up of access permissions. It also allows the uploading of events from StarNET in a format capable of being read by most popular spreadsheet programs including Microsoft Excel.



Technical Information

Component	Single Machine (Server / Client)	Server Only	Client Only
Operating System			
Minimum	Windows XP SP3	Windows Server 2003 R2	Windows XP SP3
Recommended	Windows Server 2008 R2	Windows Server 2008 R2	Windows 7
Processor			
Minimum	Intel Pentium Dual Core	Intel Pentium Dual Core	Intel Pentium Dual Core
Memory*			
Minimum	4GB	4GB	2GB
Recommended	8GB	8GB	2GB
Graphics Resolution			
Minimum	1280x1024	1280x1024	1280x1024
Hard Disk*			
Minimum	80GB	80GB	80GB
Recommended	120GB	120GB	80GB

*The disk and memory sizes are subject to system configuration/size.

Part Number	StarWatch - Express Software Suite
S000100	StarWatch - Single user, alarm management ONLY, plus Graphics
S000101	StarWatch - Single user max 32 doors plus Graphics
S000107	S000100 - Minor version single step upgrade (e.g. v3.1 - v3.2), single user, alarm management ONLY, plus Graphics
S000108	S000100 - Major version upgrade (e.g. v3.x - v4.0), single user, alarm management ONLY, plus Graphics
S000109	S000101 - Minor version single step upgrade (e.g. v3.1 - v3.2), single user max 32 doors plus Graphics
S000110	S000101 - Major version upgrade (e.g. v3.x - v4.0), single user max 32 doors plus Graphics
S000102	Card Studio Badge Management - requires printer and accessories
S000103	32 Door Expansion Pack (max 64 doors/ system)
S000104	Legacy Device Interface (LDI) - per single communications port (SG1/ II / support only)
S000105	CCTV Serial Interface (per comm port - see datasheet for list of supported systems)
S000106	CIV to CV Card Database Import Utility
Part Number	StarWatch PRO - Integrated Security Management Suite
S000200	StarWatch PRO - Single server license , 64 doors plus Graphics
S000210	S000200 - Minor version single step upgrade (e.g. v3.1- v3.2) single server license , 64 doors plus Graphics
S000211	S000200 - Major version upgrade (e.g. v3.x - v4.0), single server license , 64 doors plus Graphics
S000209	1 Client License
S000201	5 Client License Pack
S000202	10 Client License Pack (maximum number of clients per system)
S000203	Card Studio Badge Management - requires printer and accessories
S000204	64 Door Expansion Pack
S000205	Unlimited Door Expansion Pack
S000206	Legacy Device Interface (LDI) - per single communications port (SG1/ II support only)
S000207	CCTV Serial Interface (per comm port - see datasheet for list of supported systems)
S000208	Video Management Suite (refer to datasheet)
S000213	Third Party Data Exposure (per system)
S000214	Dynamic Mustering (per system)
S000215	Guard Tour Software License
S000216	Visitor Management Software License
S000217	Custom Event Search Software License
S000106	CIV to CV Card Database Import Utility
Part Number	StarWatch Enterprise - Integrated Security Management Suite
S000300	StarWatch Enterprise - Single server license, unlimited doors, all modules ex. LDI & CIV to CV utility
S000308	S000300 - Minor version single step upgrade (e.g. v3.1 - v3.2), single server license
S000309	S000300 - Major version upgrade (e.g. v3.x - v4.0), single server license
S000307	Legacy Device Interface (LDI) - per single communications port (SG1/ II support only)
S000106	CIV to CV Card Database Import Utility
S000306	1 Client License
S000301	5 Client License Pack
S000302	10 Client License Pack
S000303	25 Client License Pack
S000304	50 Client License Pack
S000305	100 Client License Pack



Remsdaq Limited, Parkway, Deeside Industrial Park, Deeside, Flintshire, CH5 2NL, United Kingdom.

tel: +44 (0) 1244 286495 fax: +44 (0) 1244 286496 web: www.remsdaq.com mail: sales@remsdaq.com Registered in England No. 3417251.

Remsdaq has a policy of continuous product development and improvement.

Whilst all information is correct at the time of going to press, we reserve the right to make changes without notice. All trademarks are duly acknowledged.